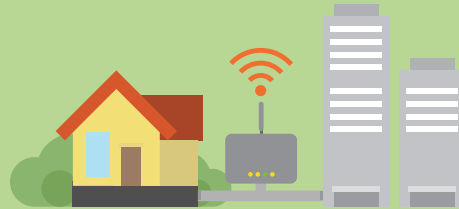


SMART LIVING

Current Status



End May 2024
Around **45 000**
free Wi-Fi hotspots



Feb 2024
Household broadband
penetration rate **97.4%**

Feb 2024
Mobile subscriber penetration rate

323.7%

2022
Smart phone penetration rate of persons
aged 10 and over **97.1%**



End Apr 2024
Faster Payment System (FPS)

14.38 million registrations

Around **1.56 million** average daily
number of transactions



2023-24



Accident &
Emergency

2.14 million
attendances



Specialist
Outpatient

8.37 million
attendances



Primary
Care

6.36 million
attendances

End Apr 2024

Electronic Health Record Sharing System
(eHealth)



6 million registrations

3 000 healthcare providers joined

55 000 healthcare professionals have accounts

(Excluding invalid accounts, such as deceased, withdrawn or cancelled, etc.)



Aged 65+

1.64 million
(22.7%)*

2.67 million
(35.0%)*



2023

2043

* Percentage of total population,
excluding foreign domestic helpers

Initiatives

Wi-Fi Connected City

Recreation, Sports and Leisure, and Culture

eID/"iAM Smart" Applications

Digital Payment

Support for the Elderly and Persons with Disabilities and their Carers

Support for Healthcare

